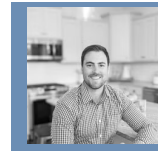


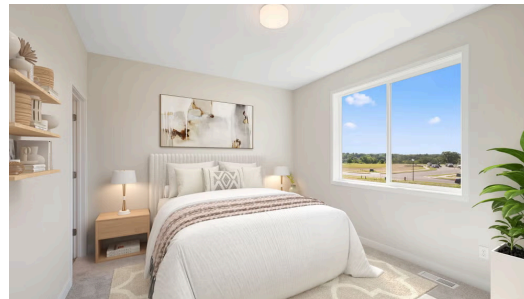
THE ASHLYN FLOORPLAN

1214 Compton Ave



QUESTIONS?
651-360-2814

Pending



Step into the Ashlyn

The Ashlyn is a gorgeous rambler-style home with everything you need on the main level! This open-layout home is both stunning and functional, featuring a gorgeous sleek white kitchen filled with natural light and an airy, bright atmosphere. A stunning open-railing staircase adds elegance, while a cozy fireplace anchors the open living space. The home also boasts a beautiful primary suite, creating the perfect blend of style, comfort, and functionality.

📍 ADDRESS

1214 Compton Ave
River Falls, WI 54022

🏡 COMMUNITY

Oak Hill

🏠 FLOORPLAN

Ashlyn

📄 PLAN DETAILS

🛏 2 Bedroom

🛁 2 Baths

🚗 3 Car Garage

📏 1,416 Sq.Ft.