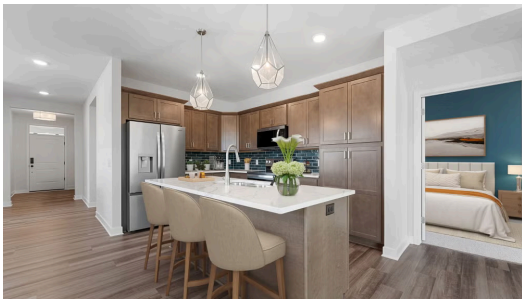




Available Now



Step into the Morgan

The Morgan is a brand-new paired home by Creative Homes, offering a fresh, modern, and highly functional layout in one of Hudson's most sought-after paired-home communities. This light-filled home features an open-concept design, wide staircases, and gorgeous designer details with stylish pops of blue throughout, all crafted with the exceptional quality and attention to detail Creative Homes is known for. With its cohesive neighborhood setting, prime Hudson location, and low-maintenance lifestyle, the Morgan delivers the perfect blend of comfort, convenience, and contemporary style—making everyday living feel effortless.

ADDRESS

20 Palomino Ct
Hudson, WI 54016

PRICE

\$639,900

COMMUNITY

Canter Crossing

FLOORPLAN

Morgan

PLAN DETAILS

3 Bedroom

2 Baths

2 Car Garage

1 Stories

2,252 Sq.Ft.