

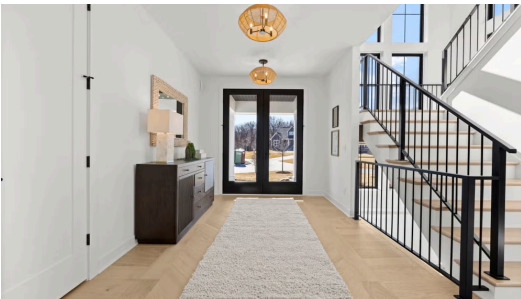
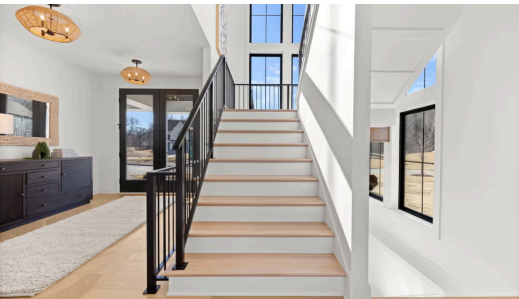
THE NONE FLOORPLAN

# 1234 Laurie Ct



QUESTIONS?  
651-333-4181

Available November 2025



We can build your dream home right here in Roseville! Choose from one of our expertly designed floorplans with plenty of room for personalization or bring us your own design. Pictures are an example of a previously built Riley floorplan. Tucked into this incredible floorplan are four bedrooms, and two and a half bathrooms, and a command center that can double as a great second office, or a craft room for the kids! Walk upstairs to find all bedrooms, the laundry, and a loft with plenty of natural light!

## ADDRESS

1234 Laurie Ct  
Roseville, MN 55113

## PRICE

\$719,900

## COMMUNITY

Legacy at Midland Hills

## FLOORPLAN

## PLAN DETAILS

4 Bedroom

2 Car Garage

3 Baths

2,969 Sq.Ft.