

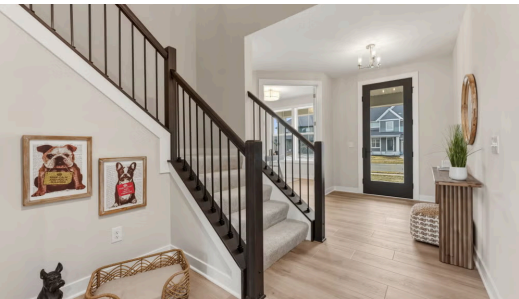
THE KENTON FLOORPLAN

18250 102nd Place N



QUESTIONS?
651-333-4181

Available Now



Step into the Kenton

Discover the gorgeous Kenton in Evanswood, Maple Grove – a stunning single-family home that showcases Creative Homes’ signature quality, innovation, and design. This brand-new plan is an exciting twist on our Kendall floor plan, featuring a showstopping staircase in the foyer, abundant natural light, and beautiful design details throughout. Enjoy a stunning kitchen, a floor-to-ceiling modern fireplace, and a luxurious primary bath with a walk-in shower and standalone tub, perfectly blending style and functionality. Evanswood’s serene setting and convenient Maple Grove location make this home a true standout.

ADDRESS

18250 102nd Place N
Maple Grove, MN
55311

PRICE

\$939,900

COMMUNITY

Evanswood

FLOORPLAN

Kenton

PLAN DETAILS

4 Bedroom

3 Car Garage

4 Baths | 1 Half Bath

3,515 Sq.Ft.