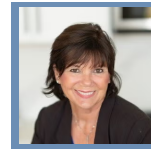


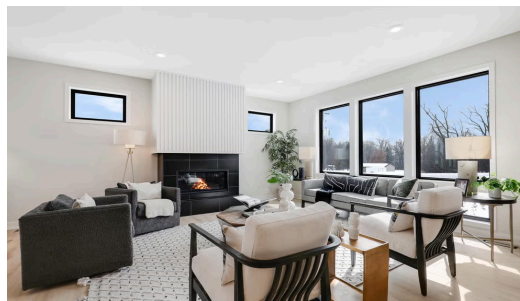
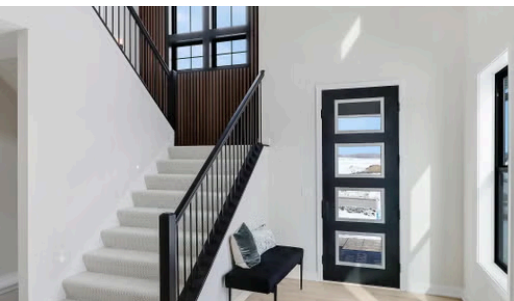
## THE MIDDLETON FLOORPLAN

# 17970 103rd Ave N



**QUESTIONS?**  
 651-333-4181

Pending



## Step into the Middleton

Step into the Middleton to be greeted by a gorgeous, sunlit foyer. The spacious open layout on the main level comes together with a beautiful kitchen and cozy fireplace. Also notable in this home is the mudroom for its spaciousness and incredible storage. Upstairs you'll find the lovely owners' suite, three more bedrooms, the laundry room, and a loft. The basement includes a family room perfect for entertaining friends and family and another bed and bathroom. Come home to this award-winning floor plan today!

### 📍 ADDRESS

17970 103rd Ave N  
 Maple Grove, MN  
 55311

### 🏠 COMMUNITY

Evanswood

### 🏠 FLOORPLAN

Middleton

### 📋 PLAN DETAILS

🛏 5 Bedroom

🚗 3 Car Garage

📏 4,796 Sq.Ft.

🚿 4 Baths | 1 Half Bath

🏠 2 Stories