

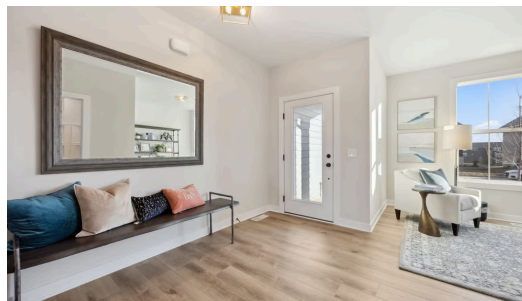
THE RILEY FLOORPLAN

10377 Shadyview Ln



QUESTIONS?
651-333-4181

Available July 2026



Step into the Riley

Welcome home to the Riley! A stunning open concept home with everything you need on the main level. The primary suite has convenient access to the laundry room and mud room through the spacious walk-in closet. The basement is a spacious area to do as you please with this plan.

ADDRESS

10377 Shadyview Ln
Maple Grove, MN
55311

PRICE

\$839,900

COMMUNITY

Evanswood

FLOORPLAN

Riley

PLAN DETAILS

4 Bedroom

3 Baths

3 Car Garage

1 Stories

3,533 Sq.Ft.