

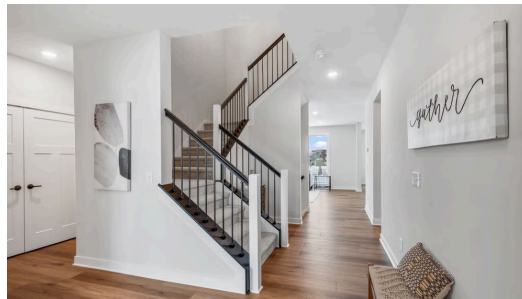
THE KENDALL FLOORPLAN

10261 Shadyview Ln N



QUESTIONS?
651-333-4181

Available Now



Step into the Kendall

Step into this beautifully designed new construction home located in one of Maple Grove's most desirable communities, offering the perfect blend of luxury, functionality, and everyday comfort. This home features a chef-inspired gourmet kitchen with high-end finishes, perfect for cooking, entertaining, and gathering with family and friends. The open-concept main level flows seamlessly into the spacious great room and dinette, creating an inviting space filled with natural light and ideal for modern living. One of the standout highlights is the expansive primary sanctuary suite, designed as a true retreat. Enjoy ...

ADDRESS

10261 Shadyview Ln N
Maple Grove, MN
55311

PRICE

\$819,900

COMMUNITY

Evanswood

FLOORPLAN

Kendall

PLAN DETAILS

4 Bedroom

3 Baths | 1 Half Bath

3 Car Garage

2 Stories

3,348 Sq.Ft.