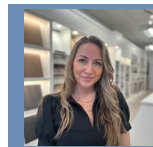


THE PINECROFT FLOORPLAN

5697 57th Pl N



QUESTIONS?
651-504-3360

Sold



Step into the Pinecroft

Showcasing during the Fall Parade of Homes! Open and "airy" rambler walkout, with 3 bedrooms up, 2 bedrooms down. Fully finished basement featuring wet bar, sunken theatre/flex room, and large family room! Set on a private 1-acre lot at the end of a cul-de-sac. Located in the Hidden Meadows Community offering private homesites while being only minutes from downtown Stillwater, St. Croix River, Lake Elmo Park Reserve, Sunfish Mountain bike and hiking trails, golf courses, shopping, and dining to name a few. Open to tour Friday-Sunday 11-5PM, By appointment Monday ...

ADDRESS

5697 57th Pl N
Lake Elmo, MN 55042

COMMUNITY

Hidden Meadows

FLOORPLAN

Pinecroft

PLAN DETAILS

5 Bedroom

3 Car Garage

4,370 Sq.Ft.

3 Baths | 1 Half Bath

1 Stories