

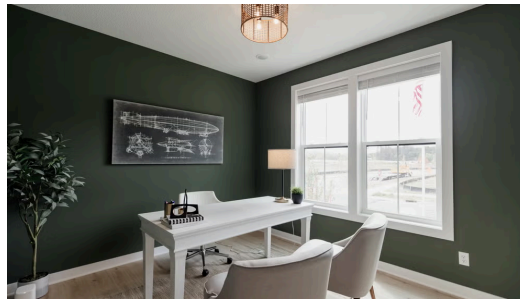
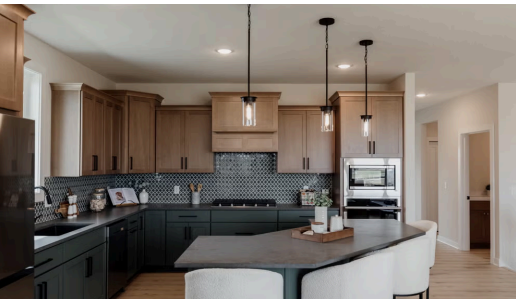
## THE RILEY FLOORPLAN

# 3299 Linden Ave N Ct



**QUESTIONS?**  
 651-333-4181

Available October 2025



## Step into the Riley

Welcome home to the Riley! A stunning open concept home with everything you need on the main level. The primary suite has convenient access to the laundry room and mud room through the spacious walk-in closet. The basement is a spacious area to do as you please with this plan.

### 📍 ADDRESS

3299 Linden Ave N Ct  
 Lake Elmo, MN 55042

### 💰 PRICE

\$729,900

### 🏘️ COMMUNITY

Easton Village

### 🏠 FLOORPLAN

Riley

### 📋 PLAN DETAILS

🛏️ 3 Bedroom

🚗 3 Car Garage

📏 3,009 Sq.Ft.

🛀 3 Baths

🏠 1 Stories