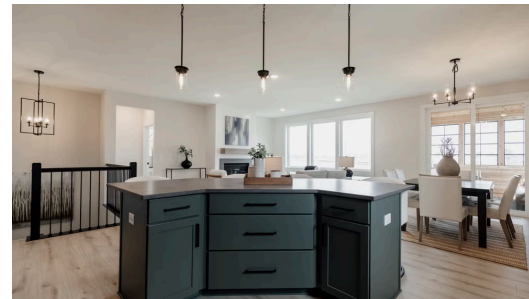
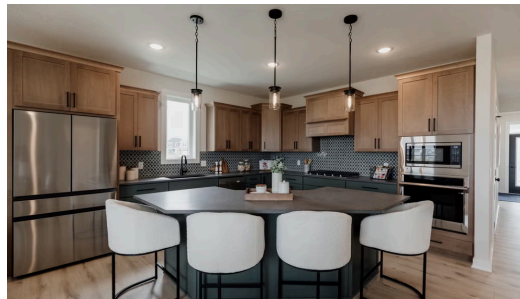
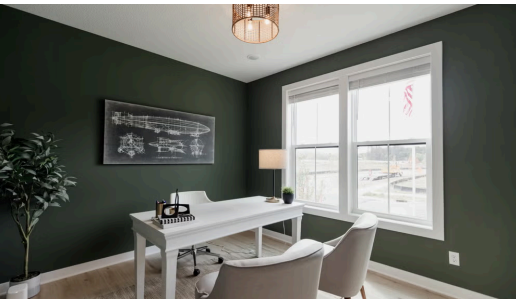




Available September 2025



Step into the Riley

Welcome home to the Riley! This stunning open-concept home offers everything you need on the main level for easy, everyday living. The spacious primary suite features a walk-in closet with convenient access to both the laundry room and mudroom. Downstairs, the expansive basement offers endless possibilities to make the space your own.

📍 ADDRESS

 3287 Linden Ave N
 Lake Elmo, MN 55042

💰 PRICE

\$669,900

🏡 COMMUNITY

Easton Village

🏠 FLOORPLAN

Riley

📋 PLAN DETAILS

🛏 4 Bedroom

🛁 3 Baths

🚗 3 Car Garage

🏠 1 Stories

📏 3,290 Sq.Ft.