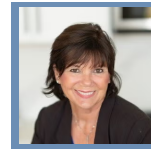


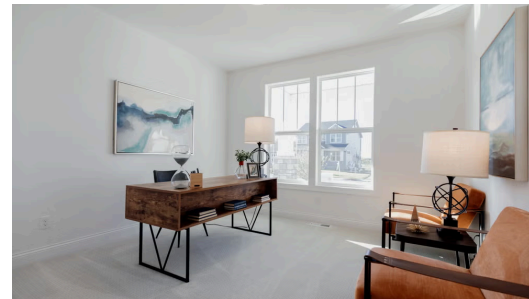
THE VICTORIA FLOORPLAN

3280 Linden Ave N



QUESTIONS?
 651-333-4181

Available February 2026



Step into the Victoria

Our most popular main level living floor plan, The Victoria, has all of the best unique features we offer including tons of glass windows, flooding natural light, extra wide hallways and staircase and high ceilings throughout. The primary suite is notable in this plan with a large walk-in closet connected to the laundry room and mud room all on the main level. Downstairs you can find a large family room and space to make your own!

📍 ADDRESS

3280 Linden Ave N
 Lake Elmo, MN 55042

💰 PRICE

\$655,000

🏠 COMMUNITY

Easton Village

📐 FLOORPLAN

Victoria

📋 PLAN DETAILS

🛏 3 Bedroom

🚗 2 Car Garage

📏 3,008 Sq.Ft.

🛀 3 Baths

🏠 1 Stories