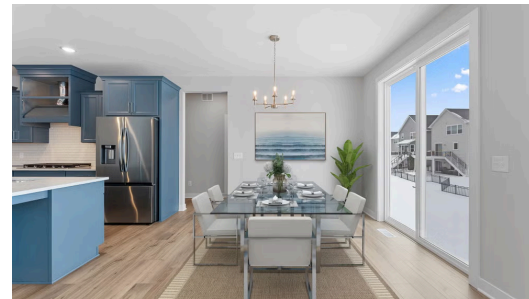




Pending



## Step into the Sutherland

Step into the Sutherland! Be greeted by a den at the front of the home, perfect for working from home. As you make your way inside, you'll come across the staircase leading both upstairs and downstairs. The kitchen, dining, and great room flow together beautifully, featuring fun blue cabinetry, large glass windows, and tons of natural light. The great room is anchored by a floor-to-ceiling stone fireplace, creating a stunning centerpiece. Upstairs includes four bedrooms, including a stunning primary suite, two bathrooms, and the laundry room. The basement is incredibly ...

### 📍 ADDRESS

11761 35th St N  
Lake Elmo, MN 55042

### 🏘️ COMMUNITY

Easton Village

### 🏠 FLOORPLAN

Sutherland

### 📋 PLAN DETAILS

🛏️ 4 Bedroom

🚗 3 Car Garage

📏 2,552 Sq.Ft.

🛀 3 Baths | 1 Half Bath

🏠 2 Stories