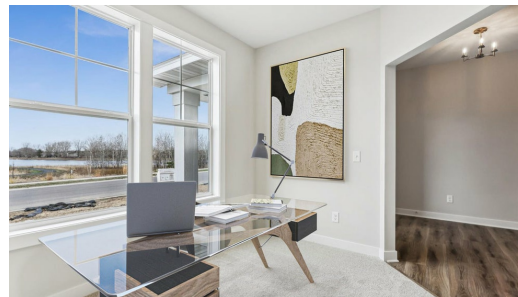




Available Now



Step into the Kendall

Move-in ready! Step into the Kendall plan to be greeted by a beautiful den and grandeur staircase. Pass through the foyer where you will find a spacious great room, kitchen and dinette. The kitchen and great room come together with large windows and a floor to ceiling stone fireplace. Upstairs, you will find four bedrooms and two bathrooms. The spacious owner's suite offers dual sinks, shower, and soaking tub. The fifth bedroom, tons of storage, and a spacious family room finish the lower level. Come home to the beautiful Kendall ...

ADDRESS

 5742 135th St
 Hugo, MN 55038

PRICE

\$684,900

COMMUNITY

Adelaide Landing

FLOORPLAN

Kendall

PLAN DETAILS

5 Bedroom

3 Car Garage

3,327 Sq.Ft.

3 Baths | 1 Half Bath

2 Stories