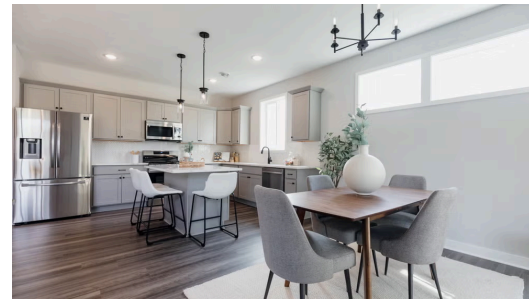
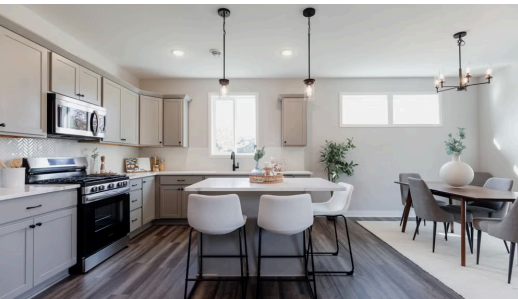




Available January 2026



## Step into the Hudson

The Hudson is a stunning rambler-style home that combines exceptional quality with great value. Designed for main-level living, it features a primary suite and laundry on the main floor, along with two additional bedrooms. From the foyer, you're welcomed by a versatile bedroom or den, a full bathroom, and another bedroom. The kitchen, great room, and dinette flow together seamlessly, filled with natural light and an open, airy feel. The kitchen is equipped with beautiful cabinetry, high-quality appliances, and a spacious island. This home can be built slab on grade ...

### 📍 ADDRESS

 2173 Westpointe Dr  
 Hastings, MN 55033

### 🏡 COMMUNITY

Heritage Ridge

### 🏠 FLOORPLAN

Hudson

### 📋 PLAN DETAILS

🛏 3 Bedroom

🛁 3 Baths

🚗 2 Car Garage

📏 1,672 Sq.Ft.