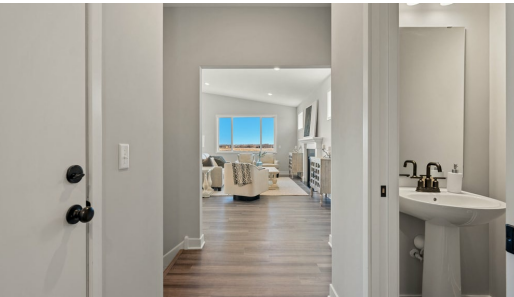


Available May 2024



Step into the Arlow

The Arlow is a beautiful single-family home with excellent quality! Step into the foyer and notice the staircase going up along with the powder bath. As you make your way inside, you'll notice the tons of natural light and the open feel. The kitchen is the heart of the home with a gorgeous island and spacious pantry. The beautiful primary suite along with two more bedrooms and the laundry room are all upstairs.

ADDRESS

2132 Westpointe Dr
Hastings, MN 55033

PRICE

\$474,900

COMMUNITY

Heritage Ridge

FLOORPLAN

Arlow

PLAN DETAILS

3 Bedroom

2 Baths | 1 Half Bath

3 Car Garage

2 Stories

1,535 Sq.Ft.