

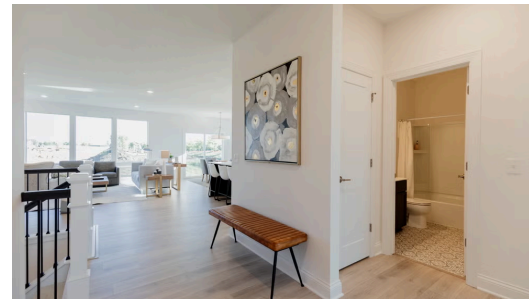
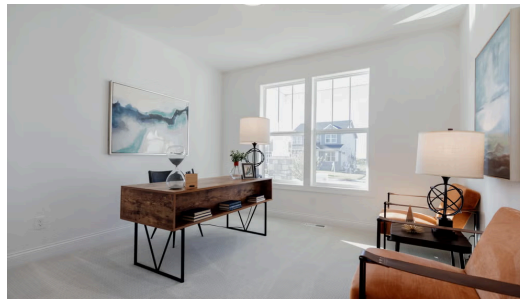
THE VICTORIA FLOORPLAN

2160 Ridgepointe Dr N



QUESTIONS?
 651-333-4181

Available October 2025



Step into the Victoria

Come home to The Victoria! The Victoria, has all of the best unique features we offer including tons of glass windows, flooding natural light, extra wide hallways and staircase and high ceilings throughout. The primary suite is notable in this plan with a large walk-in closet connected to the laundry room and mud room all on the main level. Downstairs you can find a large family room and space to make your own!

📍 ADDRESS

2160 Ridgepointe Dr N
 Hastings, MN 55033

💰 PRICE

\$599,900

🏠 COMMUNITY

Heritage Ridge Villas

📐 FLOORPLAN

Victoria

📋 PLAN DETAILS

🛏 3 Bedroom

🚗 2 Car Garage

📏 3,173 Sq.Ft.

🛀 3 Baths

🏠 1 Stories