

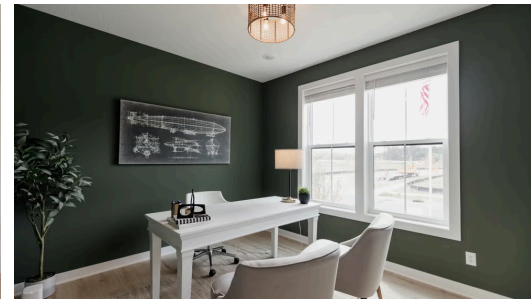
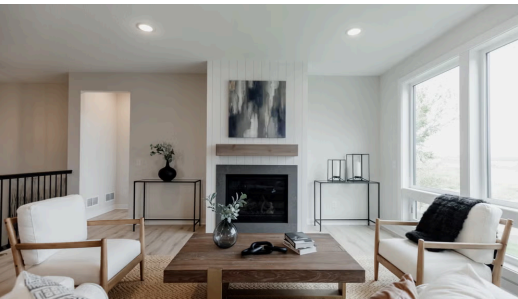
THE RILEY FLOORPLAN

1832 Ridgpointe Ct N



QUESTIONS?
 651-333-4181

Available October 2025



Step into the Riley

Welcome home to the Riley! A stunning open concept home with everything you need on the main level. The primary suite has convenient access to the laundry room and mud room through the spacious walk-in closet. The basement is a spacious area to do as you please with this plan.

📍 ADDRESS

1832 Ridgpointe Ct N
 Hastings, MN 55033

💰 PRICE

\$589,900

🏘️ COMMUNITY

Heritage Ridge Villas

🏠 FLOORPLAN

Riley

📋 PLAN DETAILS

🛏️ 4 Bedroom

🚗 2 Car Garage

📏 2,745 Sq.Ft.

🛀 3 Baths

🏠 1 Stories