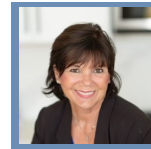


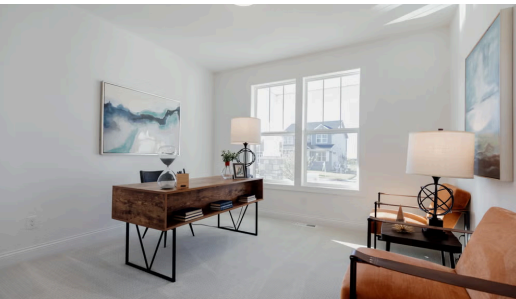
THE VICTORIA FLOORPLAN

1824 Ridgepointe Ct



QUESTIONS?
 651-333-4181

Pending



Step into the Victoria

Our most popular main level living floor plan, The Victoria, has all of the best unique features we offer including tons of glass windows, flooding natural light, extra wide hallways and staircase and high ceilings throughout. The primary suite is notable in this plan with a large walk-in closet connected to the laundry room and mud room all on the main level. Downstairs you can find a large family room and space to make your own!

ADDRESS

1824 Ridgepointe Ct
 Hastings, MN 55033

COMMUNITY

Heritage Ridge Villas

FLOORPLAN

Victoria

PLAN DETAILS

3 Bedroom

3 Baths

2 Car Garage

1 Stories

2,575 Sq.Ft.