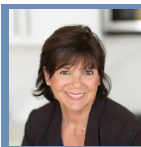
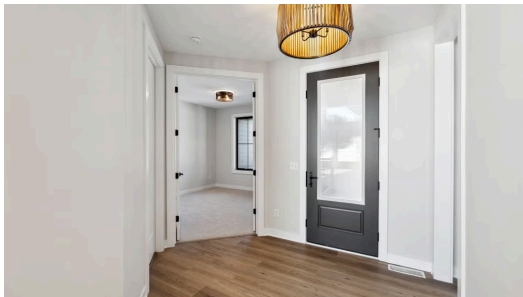


THE CUSTOM FLOORPLAN

# 14868 Panoramic Rd S



QUESTIONS?  
651-333-4181



## Step into the Custom

Model coming soon to Erin Glen! This home is an absolutely gorgeous rambler walkout. Meticulously designed by the Creative Custom team, this home is a great representation of the incredible craftsmanship of Creative Custom and the possibilities of building your dream home.

### ADDRESS

14868 Panoramic Rd S  
Denmark Township,  
MN 55033

### PRICE

\$1,595,000

### COMMUNITY

Erin Glen

### FLOORPLAN

Custom

### PLAN DETAILS

4 Bedroom

4 Car Garage

3 Baths

3,381 Sq.Ft.