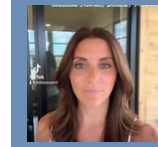


## THE MIDDLETON FLOORPLAN

# 4878 128th Cir NE



**QUESTIONS?**  
 651-401-7952

Sold



## Step into the Middleton

Step into The Middleton, a stunning single-family home designed to impress. The sun-filled foyer welcomes you with its elegant staircase leading to an open loft that overlooks the entryway. The heart of the home features an open layout with a floor-to-ceiling stone fireplace, expansive glass windows, and a gorgeous kitchen island, perfect for gathering and entertaining. Upstairs, you'll find four spacious bedrooms, including a luxurious primary suite that offers the perfect retreat. The lower level adds even more space with a fifth bedroom, an additional bathroom, and a large family ...

### 📍 ADDRESS

4878 128th Cir NE  
 Blaine, MN 55449

### 🏡 COMMUNITY

Oakwood Ponds

### 🏠 FLOORPLAN

Middleton

### 📋 PLAN DETAILS

🛏 5 Bedroom

🚗 3 Car Garage

📏 4,279 Sq.Ft.

🛀 3 Baths | 1 Half Bath

🏠 2 Stories