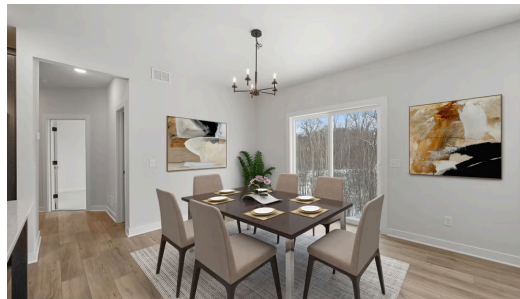


Available Now



Step into the Aspen

Step into the Aspen to be greeted by a two-story foyer that opens up into the great room and kitchen, flooded with natural light from the abundance of windows along the back wall. The great room features a floor-to-ceiling stone fireplace, creating a stunning centerpiece, while the kitchen boasts beautiful brown cabinetry, a large island, and a walk-in pantry, offering plenty of space for cooking and entertaining. This home has 6 bedrooms, including one conveniently located on the main level. Upstairs, you'll find a spacious primary suite, two additional bedrooms, ...

📍 ADDRESS

 4814 128th Cir NE
 Blaine, MN 55449

💰 PRICE

\$719,900

🏠 COMMUNITY

Oakwood Ponds

📐 FLOORPLAN

Aspen

📋 PLAN DETAILS

🛏 6 Bedroom

🚗 3 Car Garage

📏 3,416 Sq.Ft.

🚿 3 Baths | 1 Half Bath

🏠 2 Stories