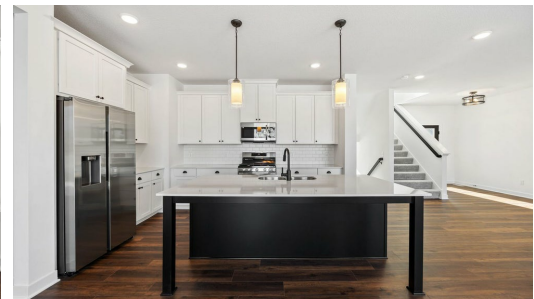
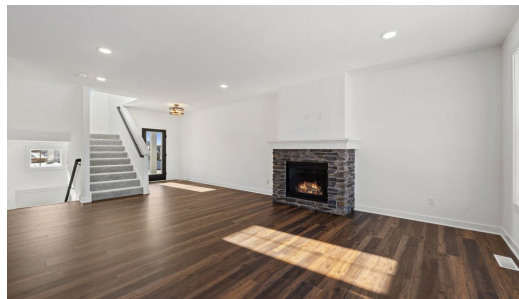
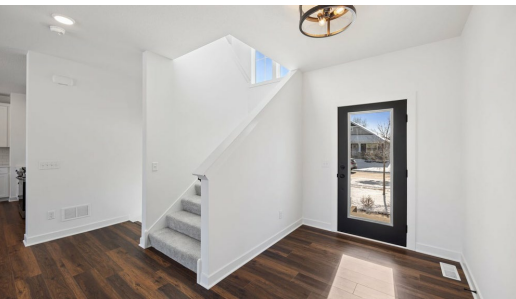


QUESTIONS?
651-401-7952

Pending



Step into the Aspen

Step into the Aspen to be greeted by a two-story foyer that opens up into the great room and kitchen area that is flooded by natural light from the plethora of windows along the back wall. The kitchen offers plenty of space alongside the walk in pantry. Step upstairs to find a spacious owners suite, two additional bedrooms, a second bathroom, the laundry room, and a loft. With plenty of space to grow in the lower level, this floor plan is just as lovely as it is spacious!

📍 ADDRESS

4714 128th Cir NE
Blaine, MN 55449

🏘️ COMMUNITY

Oakwood Ponds

🏠 FLOORPLAN

Aspen

📄 PLAN DETAILS

🛏️ 4 Bedroom

🚿 3 Baths | 1 Half Bath

🚗 3 Car Garage

🏠 2 Stories

📏 3,021 Sq.Ft.