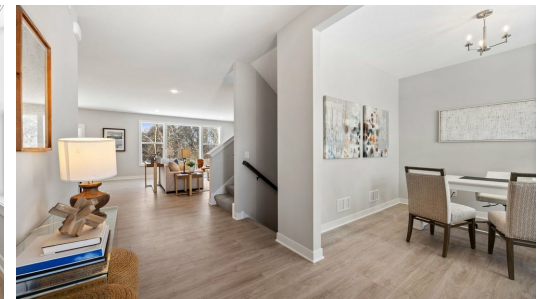
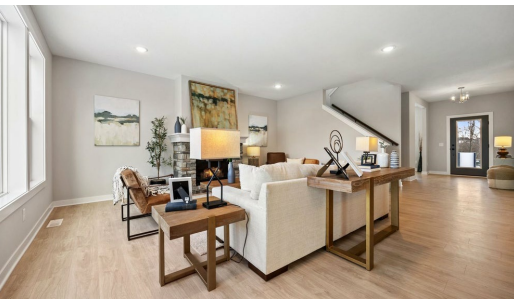


Available March 2025



## Step into the Sutherland

Welcome to the Sutherland! Step into this gorgeous home and be greeted by a den at the front—perfect for a home office or cozy retreat. As you continue inside, you'll find a stunning staircase leading both upstairs and downstairs, guiding you through a space filled with gorgeous design selections. The kitchen, dining, and great room flow together effortlessly, with large glass windows that flood the space with natural light. Upstairs, you'll find four spacious bedrooms, including a beautiful primary suite, along with two bathrooms and a conveniently located laundry room. ...

### ADDRESS

12820 Stutz Ct NE  
Blaine, MN 55449

### PRICE

\$669,900

### COMMUNITY

Oakwood Ponds

### FLOORPLAN

Sutherland

### PLAN DETAILS

5 Bedroom

3 Car Garage

3,558 Sq.Ft.

4 Baths | 1 Half Bath

2 Stories