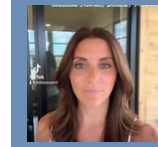


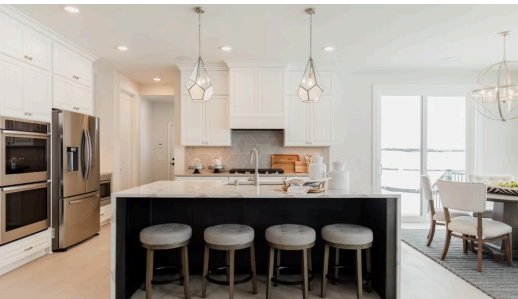
THE GIBSON FLOORPLAN

12800 Stutz Ct



QUESTIONS?
 651-401-7952

Available July 2025



Step into the Gibson

Explore the Gibson floor plan offering 5 bedrooms, 3.5 bathrooms, and plenty of space throughout! As you walk in, you'll be greeted by a den and powder bath before entering into the open layout with tons of glass and natural light. Upstairs is very spacious in the Gibson with four bedrooms two full bathrooms. The lower level has plenty of space to entertain and the fifth bedroom.

📍 ADDRESS

12800 Stutz Ct
 Blaine, MN 55449

💰 PRICE

\$742,900

🏠 COMMUNITY

Oakwood Ponds

📐 FLOORPLAN

Gibson

📋 PLAN DETAILS

🛏 5 Bedroom

🚗 3 Car Garage

📏 3,876 Sq.Ft.

🛀 3 Baths | 1 Half Bath

🏠 2 Stories