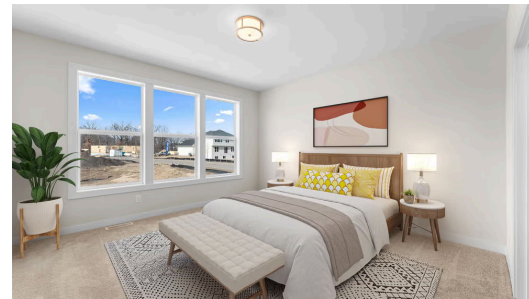


Pending



Step into the Victoria

Welcome Home to the Victoria! As one of our most popular main-level living floor plan, the Victoria is designed with stunning features that make everyday living exceptional. With expansive glass windows, abundant natural light, extra-wide hallways and staircase, and soaring ceilings, this home offers a bright and airy feel throughout. The primary suite is a standout in this design, featuring a spacious walk-in closet connected to the laundry room and mudroom—all conveniently located on the main level. Downstairs, you'll find a large family room and additional space ready to be ...

ADDRESS

 4903 127th Cir Ne
 Blaine, MN 55449

COMMUNITY

Oakwood Ponds Villas

FLOORPLAN

Victoria

PLAN DETAILS

3 Bedroom

3 Baths

2 Car Garage

1 Stories

3,027 Sq.Ft.