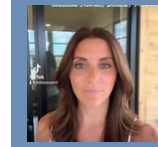


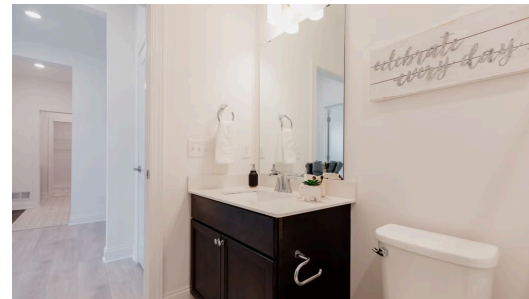
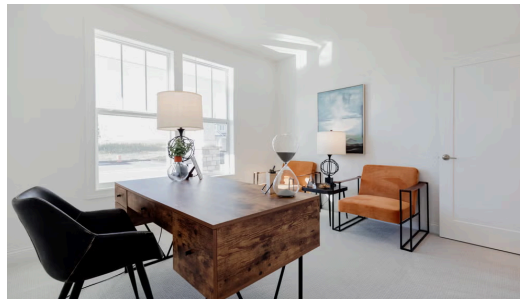
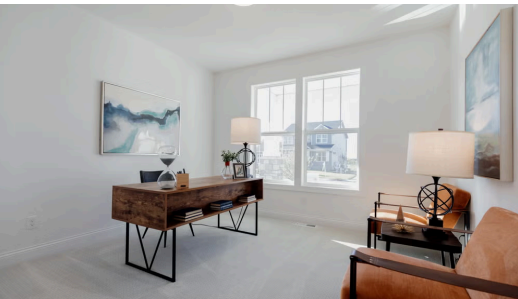
THE VICTORIA FLOORPLAN

4883 127th Cir NE



QUESTIONS?
651-401-7952

Available October 2025



Step into the Victoria

Our most popular main level living floor plan, The Victoria, has all of the best unique features we offer including tons of glass windows, flooding natural light, extra wide hallways and staircase and high ceilings throughout. The primary suite is notable in this plan with a large walk-in closet connected to the laundry room and mud room all on the main level. Downstairs you can find a large family room and space to make your own!

📍 ADDRESS

4883 127th Cir NE
Blaine, MN 55449

💰 PRICE

\$662,900

🏠 COMMUNITY

Oakwood Ponds Villas

🗺️ FLOORPLAN

Victoria

📋 PLAN DETAILS

🛏️ 3 Bedroom

🛁 3 Baths

🚗 2 Car Garage

🏠 1 Stories

📏 2,575 Sq.Ft.