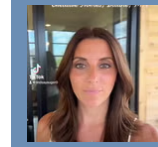


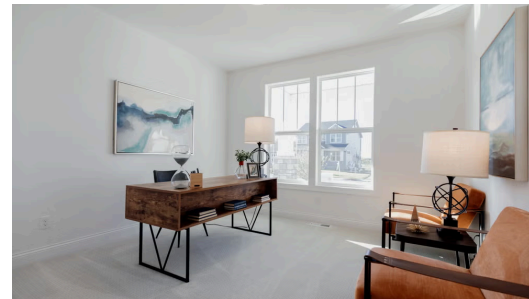
THE VICTORIA FLOORPLAN

4882 127th Ln NE



QUESTIONS?
 651-401-7952

Available February 2026



Step into the Victoria

Our most popular main level living floor plan, The Victoria, is a showstopper filled with the best and most unique features we offer. Expansive glass windows flood the home with natural light, while high ceilings and extra wide hallways and staircases create an open, airy feel throughout. The primary suite truly stands out, featuring a spacious walk in closet that connects seamlessly to the laundry room and mudroom, all conveniently located on the main level for effortless everyday living. Downstairs, a large family room and flexible space give you the ...

📍 ADDRESS

4882 127th Ln NE
 Blaine, MN 55449

🏠 COMMUNITY

Oakwood Ponds Villas

📐 FLOORPLAN

Victoria

📋 PLAN DETAILS

🛏 3 Bedroom

🛁 3 Baths

🚗 2 Car Garage

🏠 1 Stories

📏 3,008 Sq.Ft.