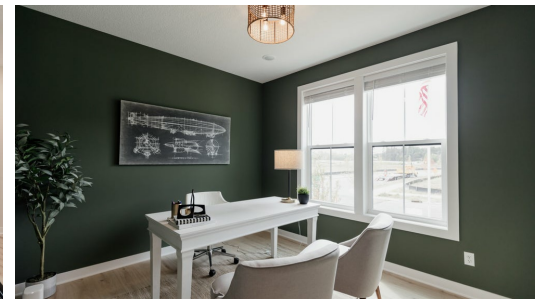


Available July 2024



Step into the Riley

Come home to this beautiful walkout Riley! A stunning open concept home with everything you need on the main level. Notable in this home is the floor to ceiling fireplace and the awesome kitchen. The primary suite has convenient access to the laundry room through the spacious walk-in closet. The basement is a spacious area to do as you please with a large family room, flex room, and third bedroom.

📍 ADDRESS

 13116 Hupp Ct NE
 Blaine , MN 55449

💰 PRICE

\$649,900

🏡 COMMUNITY

Lexington Waters

🏠 FLOORPLAN

Riley

📋 PLAN DETAILS

🛏 3 Bedroom

🚿 3 Baths

🚗 2 Car Garage

🏠 1 Stories

📏 3,290 Sq.Ft.