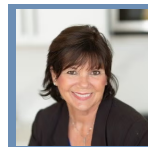
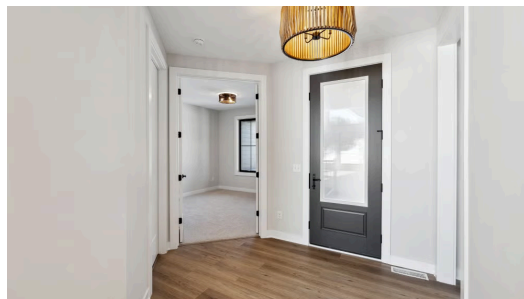


THE CUSTOM FLOORPLAN

14868 Panoramic Rd S



QUESTIONS?
651-333-4181



Step into the Custom

Model coming soon to Erin Glen! This home is an absolutely gorgeous rambler walkout. Meticulously designed by the Creative Custom team, this home is a great representation of the incredible craftsmanship of Creative Custom and the possibilities of building your dream home.

ADDRESS

14868 Panoramic Rd S
Afton, MN

PRICE

\$1,550,000

COMMUNITY

Erin Glen

FLOORPLAN

Custom

PLAN DETAILS

4 Bedroom

4 Car Garage

3 Baths

3,381 Sq.Ft.